

KANO PREMIUM TILE COLLECTION

VOL.2



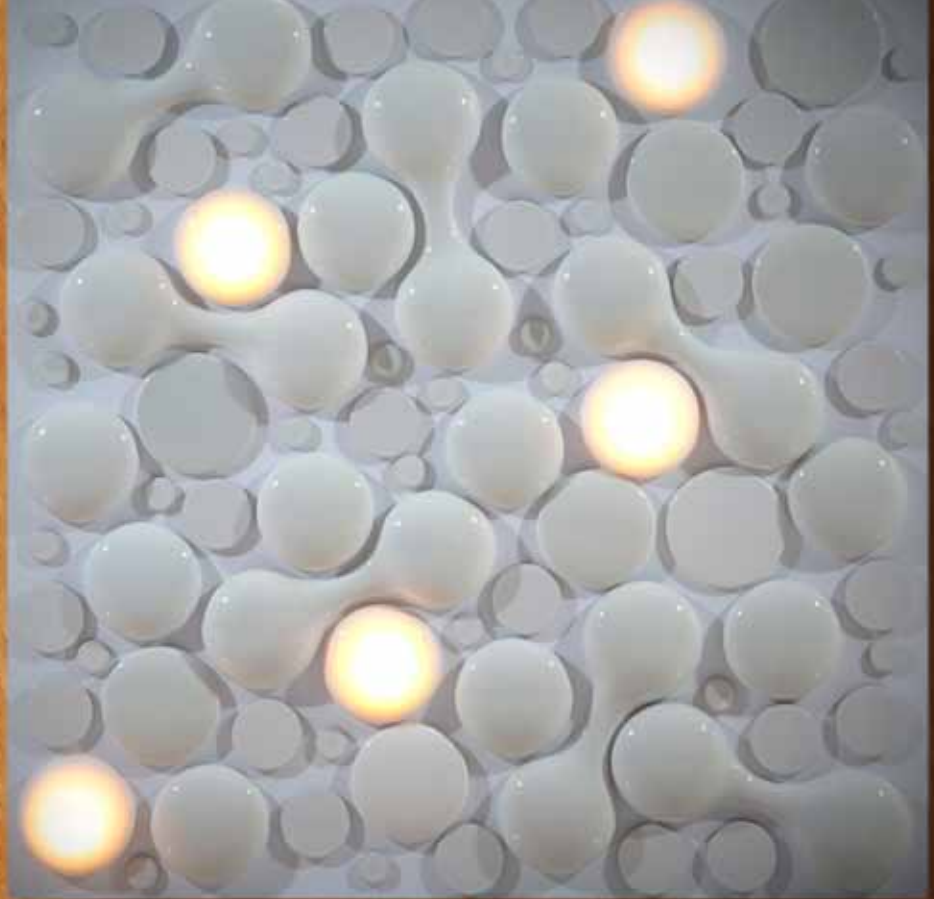
KANO
Premium tiles
MADE IN JAPAN

TILE & BEYOND
SINCE 1963

Sibuki

シブキ

Water Splashes



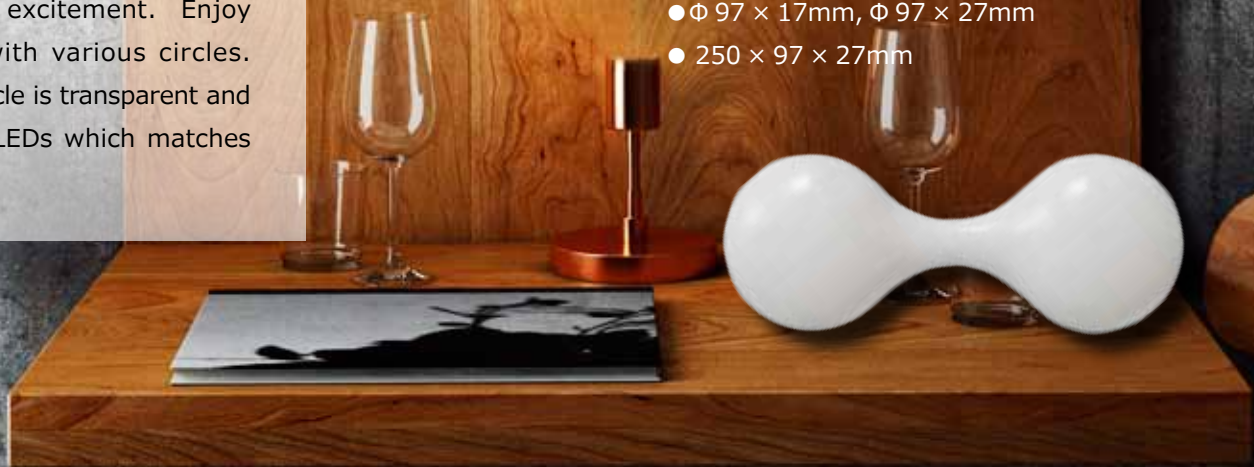
Images of water, same as Sizuku. Using the same texture but bigger size makes more massing and excitement. Enjoy the combination with various circles. The stereoscopic circle is transparent and can be fitted with LEDs which matches Sibuki very much.

Acrylic and Plywood Display Panels of Fluorescent lights and Ceramic Tiles

KN-24 ● Flat Φ 28mm, Φ 50.8mm, Φ 58mm

● Φ 97 × 17mm, Φ 97 × 27mm

● 250 × 97 × 27mm

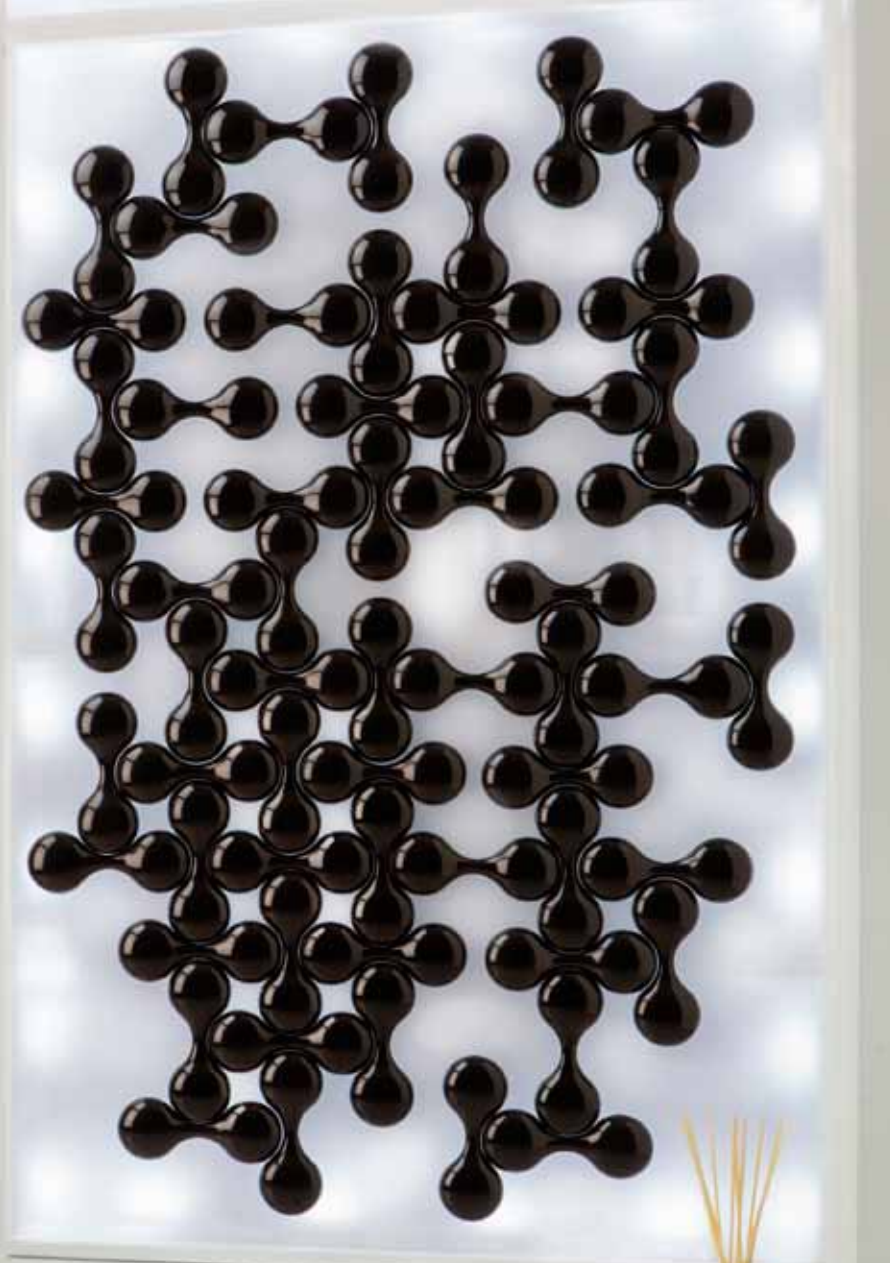


Sizuku

シズク

Water Drops

Means dew drop in Japanese. Applying tableware techniques in material, glazing and manufacturing, we achieved fresh texture of "Sizuku" in a very modern way. Install at random for decoration and can achieve such an effect like ceramic louvre by installing on glasses or acrylic plates.



KN-23

● 147x57x17mm ● 72pcs/ m²



KN-19 ● 147x57x17mm ● 72pcs/ m²



KN-22 ● 147x57x17mm ● 72pcs/ m²

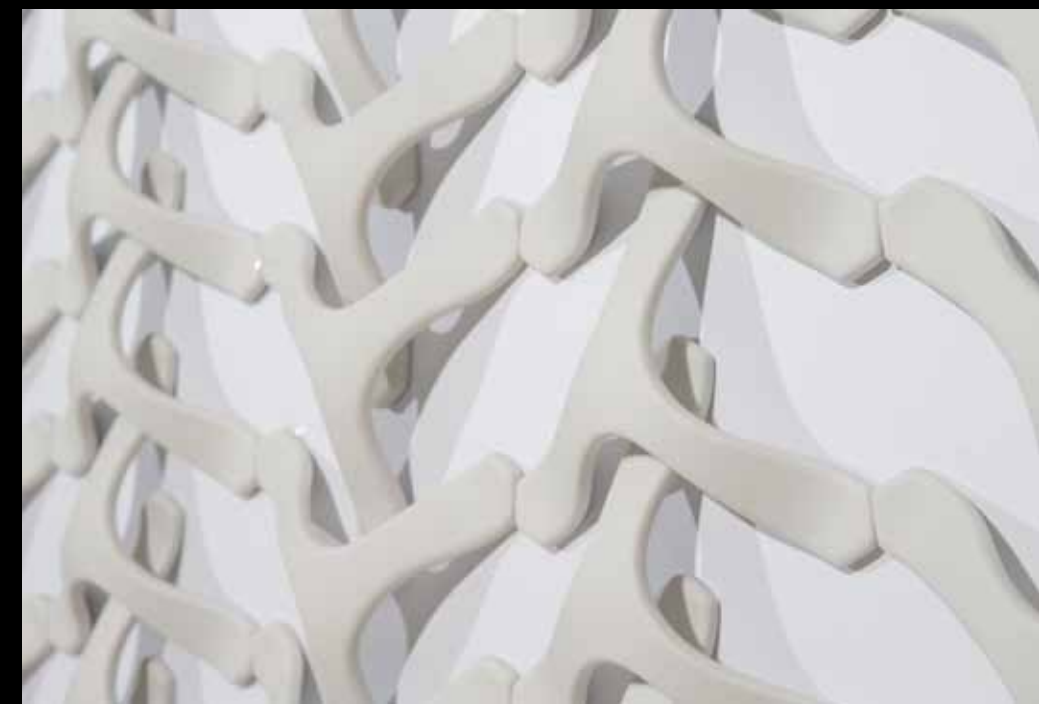
Komorebi

コモレビ

Light coming through trees



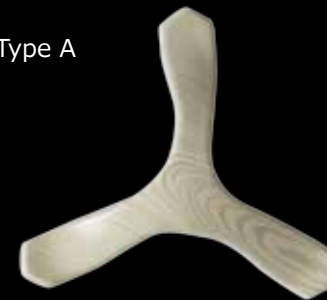
KN-29 Acrylic Display Panels of Ceramic Tiles ● 115x133x30mm ● 200pcs/ m²



'Komorebi' is a Japanese word which particularly means sunlight filtering down through the trees. This is interior tile creating atmosphere of 'Komorebi' you could enjoy, in strolling down a forest path. You can achieve such an effect like ceramic louver by installing on glasses or acrylic plates. Applied shaping and decollating technique of tableware, we created texture like branch of trees and achieved cubic effect. As interior item, you can enjoy the contrast between light and shadow.

Shape Variation

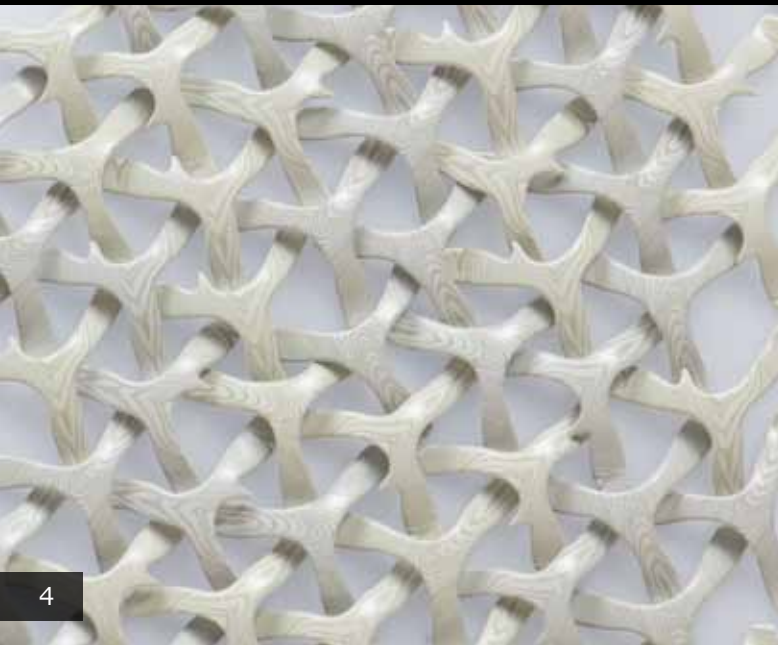
Type A



Type B



- 150x150 mm
- 200pcs/ m²



KN-5 ● 115x133x30mm

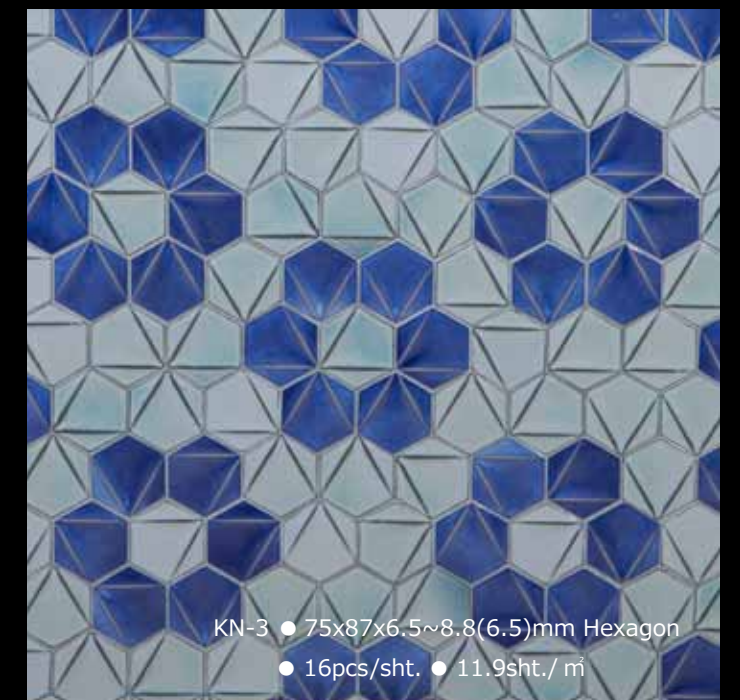
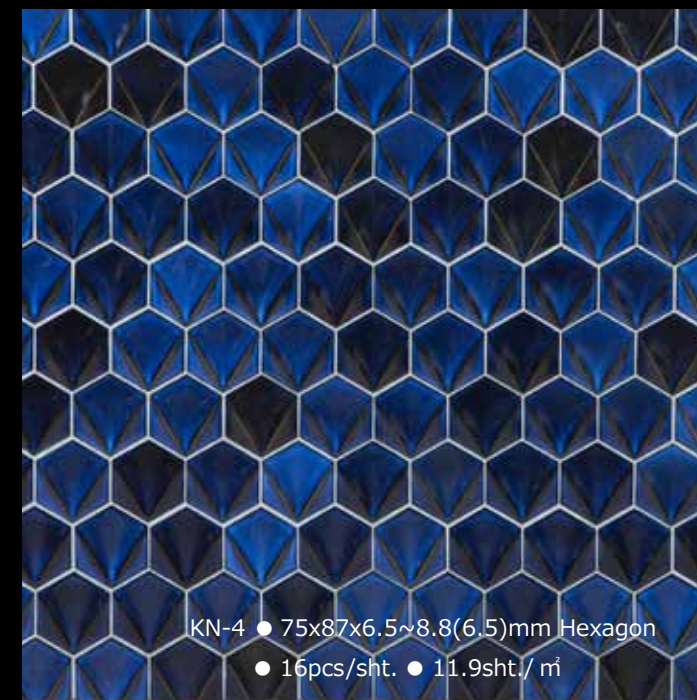


Origami

オリガミ
paper folding



This interior tile represents "Origami", Japanese traditional paper craft. The beauty of a curve on the surface and glaze blending create expressive shade. Due to the combination of color and arrow's direction, you can enjoy various designs.





K-5



K-6



KN-2 ● 75x87x8(7)mm



K-7



KN-6 ● 75x87x7.5(7)mm



KN-7 ● 75x87x7.5(7)mm



Hexagon

ヘキサゴン

- 75x87x8(7)mm Hexagon
- 16pcs/sht. ● 11.9sht./㎡

Hexagon builds wall unique.
By warping the surface, adding
height difference and pursuing
glaze blending vigorously,
Hexagon goes more unique
and luxury.



KN-1 ● 75x87x8(7)mm



Phase Hexagon

フェイズ ヘキサゴン

By adding random phase into simple hexagon,
we achieved active and unique design.



- 75x87x9mm Hexagon
- 16pcs/sht. ● 11.9sht./㎡
- 3 color mix



K-8



KN-8 ● 75x87x9mm





By adding random phase into simple square, we achieved active and unique design.

Phase

フェイズ



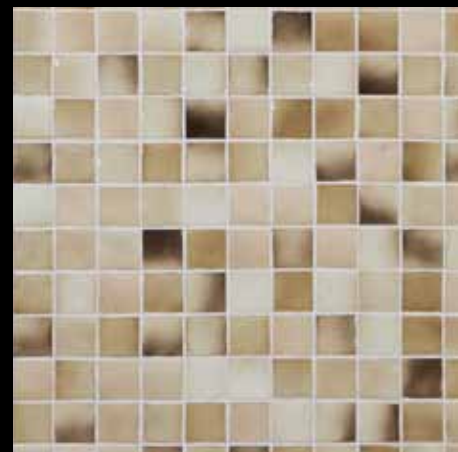
K-10 ● 100pcs/㎡
● 4 color mix



● 98x98x7mm Square



● 98x98x7mm Square



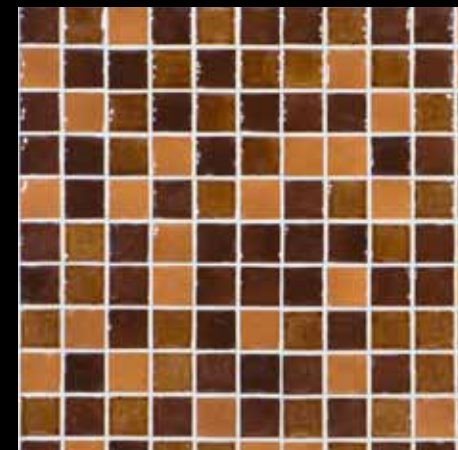
KN-14 ● 45x45x7.5mm square
● 36pcs/sht. ● 11.5sht./㎡



K-16 ● 45x45x7.5mm square
● 36pcs/sht. ● 11.5sht./㎡



KN-12 ● 45x45x7.5mm square
● 36pcs/sht. ● 11.5sht./㎡



KN-13 ● 45x45x7.5mm square
● 36pcs/sht. ● 11.5sht./㎡



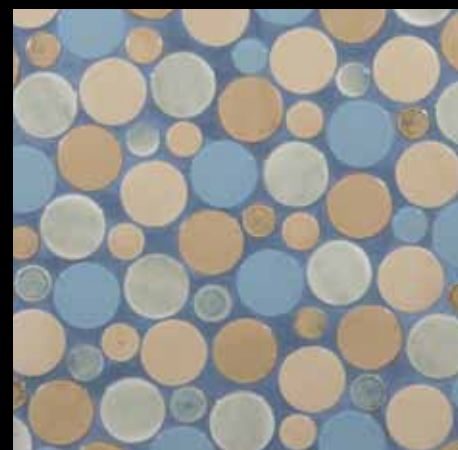
KN-20 ● 68x68x11mm Square
● 16pcs/sht. ● 12.5sht./㎡



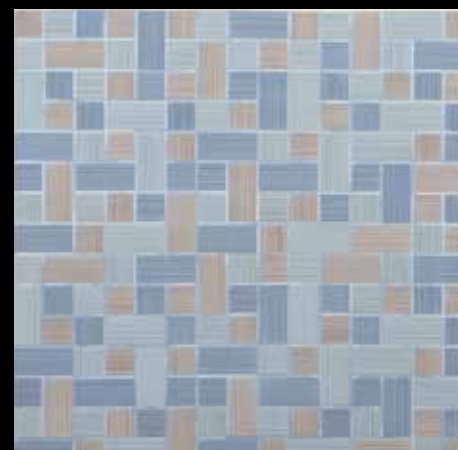
KN-19 ● 68x68x11mm Square
● 16pcs/sht. ● 12.5sht./㎡



K-3 ● 45x45x7mm square
● 36pcs/sht. ● 11.5sht./㎡



KN-18 Φ 28mm, Φ 50.8mm, Φ 58mm,
Φ 97mm, Thickness 7.8mm



KN-21 ● 45x95x7mm, 45x45x7mm
● 18pcs/sht. ● 11.5sht./㎡



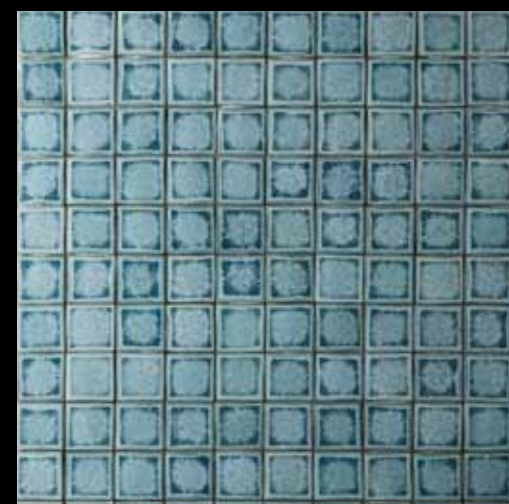
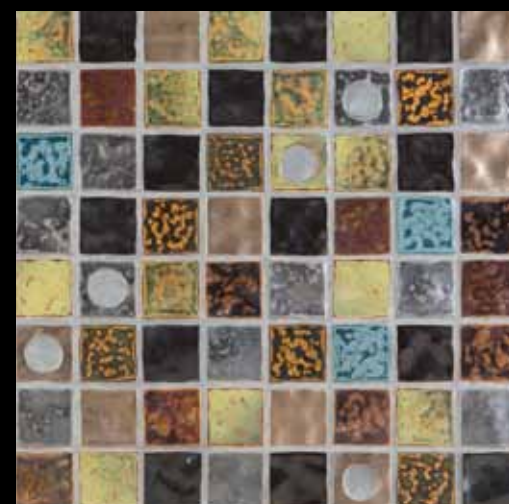
KN-11 ● 20x95x7mm half border
● 36pcs/sht. ● 12.4sht./㎡



KN-15 ● 58x217x9mm
● 73pcs/ m²

K-12 ● 58x217x9mm
● 73pcs/ m²

K-15 ● 58x217x9mm
● 73pcs/ m²



K-20 ● 65x65x12mm square
● 205pcs/ m²
● Joint Width:5mm

● 65x65x12mm square
● 205pcs/ m²
● Joint Width:5mm

K-21 ● 55x55x12mm square
● 297pcs/ m²
● Joint Width:3mm



KN-16 ● 58x217x9mm
● 73pcs/ m²



dot White Raster
dot Gold Rastex
dot White
dot White mat



K-1 ● 68x68x7mm square
● 16pcs/sht. ● 12.5sht./ m²



K-2 ● 68x68x7mm square
● 16pcs/sht. ● 12.5sht./ m²



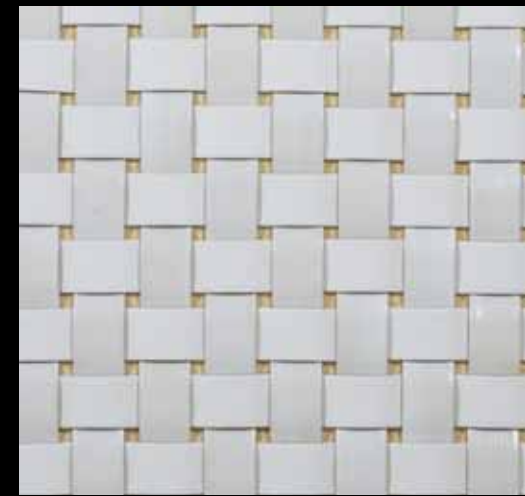
Corda KN-9 ● 100x55x15mm
● 204pcs/ m²
コルダ



K-1 ● 68x68x7mm square
● 16pcs/sht. ● 12.5sht./ m²



K-2 ● 68x68x7mm square
● 16pcs/sht. ● 12.5sht./ m²



Cross
クロス

KN-10 ● 150x150x22(7)mm
● 44.4pcs/ m²
● overlapped installation 88.8pcs/ m²





www.tilelighting.com

KANO CORPORATION is a glazed tile manufacturer, having a history over 50 years in Tajimi, one of the cities known as production area of Minoyaki. "Minoyaki" is a ceramic ware which has a long history. It has improved an artistic quality with Japanese historical tea culture (Chanoyu) since late 1500s, contributed much to create traditional Japanese ceramic ware along with Shino, Kisetu, Oribe and Hikidashiguro.

KANO has been creating sophisticated ceramic world by developing varieties of ceramic tiles, excellent MADE-IN-JAPAN product in this area. We respect tradition of unique glazing based on aesthetics of Chanoyu and keep this mind in our development.

Not only standing on tradition, but also creating a brand-new idea called "Tile+Light" . This is the combination of ceramic tiles and LEDs. We keep developing global market with facing tiles.

Designed by

 Carozzeria
Awaï
JAPAN



KANO CORPORATION

1647-3 Kasahara, Tajimi, Gifu 507-0901 JAPAN

Tel:+81 572 43 3161 Fax:+81 572 43 3162 E-mail: info@kano.co.jp