

Glazed Porcelain Tile

INISHIE

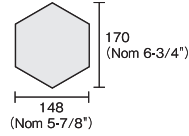
Traditional Japanese patterns on the Inishie tiles lend a hint of nostalgia.
Due to the high temperature firing, they can be used for light floor traffic.

Shade Variation  Medium

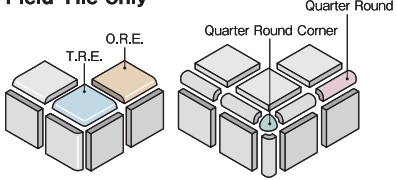
SPECIFICATIONS

●97×97mm (Nom 3-7/8"×3-7/8")
《INS-01~05》Field Tile
《INS-01/A~01/D》Flower Series - White Base
《INS-02/A~02/D》Flower Series - Black Base
《INS-01/E~01/M》Edo Series - White Base
Thickness = 7mm (Nom 1/4")

●170×148mm (Nom 6-3/4"×5-7/8")
HEXAGON
《INH-01~05》Field Tile
《INH-01/A~01/D》Flower Series - White Base
《INH-02/A~02/D》Flower Series - Black Base
《INH-01/E~01/M》Edo Series - White Base
Thickness = 7mm (Nom 1/4")



AVAILABLE TRIMS
Available only in solid 5 colors of field tile.
●97×97mm (Nom 3-7/8"×3-7/8")
Field Tile only



DESIGN PATTERN

Field Tile

Available in all shapes.



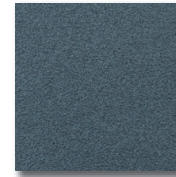
INS-01 white



INS-02 black



INS-03 ivory

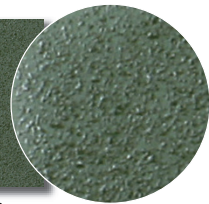


INS-04 blue



INS-05 green

Shark Skin Texture



Flower Series - White Base

Available in all shapes.

Flat Texture



INS-01/A



INS-01/B



INS-01/C



INS-01/D

Flower Series - Black Base

Available in all shapes.

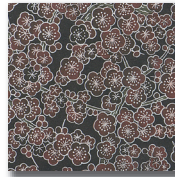
Flat Texture



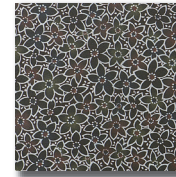
INS-02/A



INS-02/B



INS-02/C

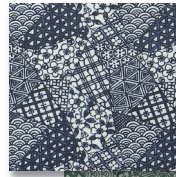


INS-02/D

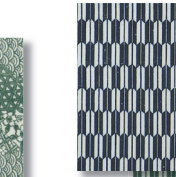
Edo Series - White Base

Available in all shapes.

Flat Texture



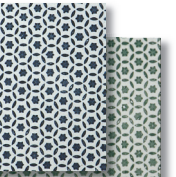
INS-01/E



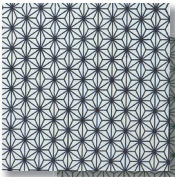
INS-01/F



INS-01/G



INS-01/H



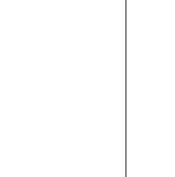
INS-01/I



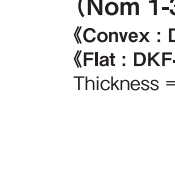
INS-01/J



INS-01/K



INS-01/L



INS-01/M

Glazed Stoneware Tile

TAIKO

The most striking feature that makes Taiko very eye-catching is its bridge-shaped configuration.
The modulated pattern designs also enhance its attractiveness.

Shade Variation  High

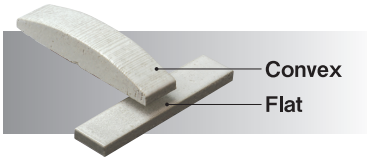
SPECIFICATIONS



●147×147mm (Nom 5-3/4"×5-3/4")
《Convex : DKT-151~155》
《Flat : DKF-151~155》
Thickness = Convex : 10~24mm (Nom 3/8"~15/16")
Flat : 10mm (Nom 3/8")

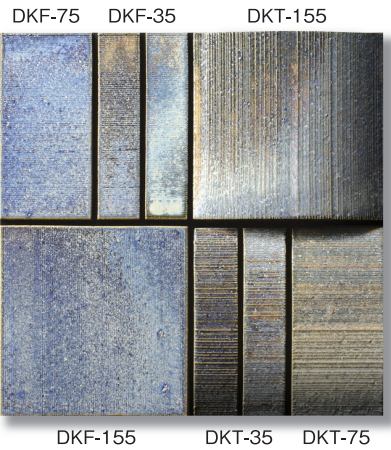
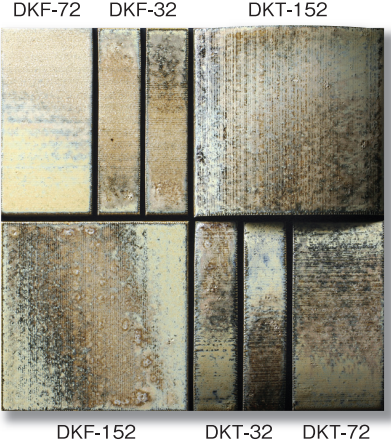
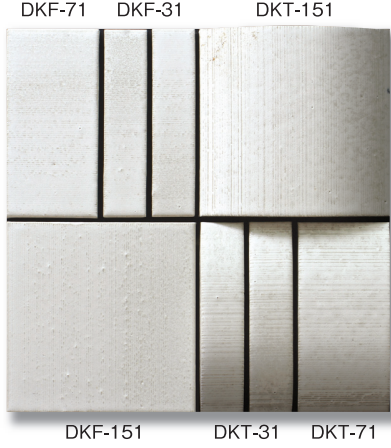


●72×147mm (Nom 2-7/8"×5-3/4")
《Convex : DKT-71~75》
《Flat : DKF-71~75》
Thickness = Convex : 10~24mm (Nom 3/8"~15/16")
Flat : 10mm (Nom 3/8")



●34.5×147mm (Nom 1-3/8"×5-3/4")
《Convex : DKT-31~35》
《Flat : DKF-31~35》
Thickness = Convex : 10~24mm (Nom 3/8"~15/16")
Flat : 10mm (Nom 3/8")

COLOR



AVAILABLE TRIMS
All shapes are available in all colors.
●72×147mm (Nom 2-7/8"×5-3/4")
Flat only

